

## ALLDATA REPAIR FEATURES AND BENEFITS

- + OEM repair information direct from the manufacturer including 26 brands and 80,000 unique vehicle combinations with original repair articles in a comprehensive online portal. Available in five languages, you have access to an easy-to-use navigation structure and search to save you time, increase efficiency, and improve overall profitability.
- + Access to the most current manufacturer information so you can repair the newest vehicles on the road and ensure every repair is profitable.
- + With original manufacturer maintenance, diagnostic and repair information, you save time and money, and can repair vehicles to quality standards, and drive repeat business.
- + Common navigation across all brands and advanced search capability make it easy to find the information you need quickly and efficiently.
- + Access to the industry's largest source of OEM information online 24/7.

## WHY YOU NEED ORIGINAL MANUFACTURER REPAIR INFORMATION

Technical data for the aftermarket needed to diagnose and repair today's complex vehicles is difficult to obtain or unavailable. To stay competitive and to maintain quality standards, you need access to a single source of original manufacturer repair information.

With ALLDATA Repair, designed by automotive experts, technicians can easily search and find in-depth technical repair information to repair vehicles correctly, save time and improve customer satisfaction.

## DATA ASSISTANCE

With ALLDATA Repair, you have access to the ALLDATA Info Center for information not yet published or when you need Service Schedules and Checklists.

An online Info Center request form is integrated within ALLDATA Repair and we will either find what you need or get it from the manufacturer. And, our trained specialists are fluent in five languages, so you can complete your repair job quickly and efficiently.



**ALLDATA**<sup>®</sup>  
AUTOMOTIVE INTELLIGENCE™



# YOUR SOURCE FOR OEM REPAIR INFORMATION

For more information, visit [www.ALLDATAEurope.com](http://www.ALLDATAEurope.com)

ALLDATA Europe GmbH  
Auenweg 11, 50679 Cologne, Germany  
[info@alldataeurope.com](mailto:info@alldataeurope.com)





## YOUR SOURCE FOR OEM REPAIR INFORMATION

### + DIAGNOSTIC AND REPAIR INFORMATION DIRECTLY FROM THE MANUFACTURER

You pride yourself on doing the job right, so start with the right information. ALLDATA doesn't alter the OEM content, so you get exactly what you need from each manufacturer – all in one easy-to-use portal.

ALLDATA Repair is a comprehensive online OEM repair information solution including 26 vehicle brands and 80,000 unique vehicle combinations with uncutted factory-correct data.

Automotive repair shops using ALLDATA improve repair quality and accuracy, save time and money and meet manufacturer standards, improving customer satisfaction and business profitability.



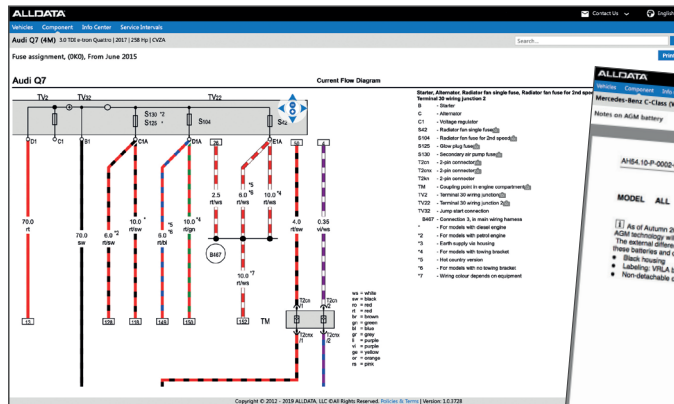
“With some information systems you only get a limited number of wiring diagrams. They are also edited and do not always match what you see on a car. With ALLDATA you get ALL the original OEM diagrams, correct and complete. Independent garages have wanted OEM repair procedures for such a long time, now through ALLDATA they are available to us in one easy-to-use solution.”

Paul Patterson,  
Northview Garage,  
Dunstable,  
England

## WHAT'S IN ALLDATA REPAIR

ALLDATA Repair is the industry standard for original licensed OEM repair information. We do not redraw or cut, so you can repair exactly to manufacturer standards.

Using ALLDATA Repair, you have instant access to diagnostic trouble codes on every vehicle and every type of fix for all the leading car manufacturers so you can quickly diagnose and complete quality, heavy diagnostic work on today's complex vehicle technology.



- + MECHANICAL REPAIR PROCEDURES
- + CHASSIS REPAIR INSTRUCTIONS
- + DIAGNOSTIC TROUBLE CODES
- + OEM ELECTRICAL WIRING DIAGRAMS
- + MANUFACTURER TECHNICAL SERVICE BULLETINS (TSBS) AND RECALLS
- + FILLING QUANTITIES / SPECIFICATIONS
- + TIGHTENING SPECS
- + SERVICE SCHEDULES AND CHECKLISTS