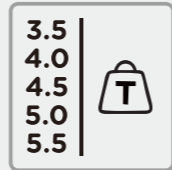


U-FS35/FS35D/FS40 U-FS45/FS50/FS55

Four post vehicle lift for wheel alignment
四轮定位四柱举升机



(CE: ONLY FOR U-FS35/FS40/FS45/FS55)



Single Manual Lock Release
单边手动解锁

For Wheel Alignment
四轮定位

Optional Pneumatic Lock Release
选配 气动解锁

Rolling jack (OPTIONAL) 二次小车 (可选配置) 2T/3T

Convenient for clients' self-installation
方便客户自行安装



Manual Control
手动小车



Pneumatic Control
气动小车

FS35 FS35D FS40 FS45 --U-X20TS/X20TQ
FS50 FS55 --U-X30TS/X30TQ
FS35 FS35D FS40 FS45 推荐U-X20TS/X20TQ,
FS50 FS55 推荐U-X30TS/X30TQ

OPTIONAL 可选配置



Position-adjustable
转角盘,位置可调



Drive-by-wire button
线控按钮

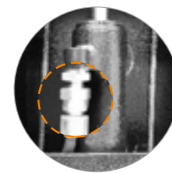


Power unit cover +
chain protector for oil
hose
动力单元罩子+油管保护
坦克链

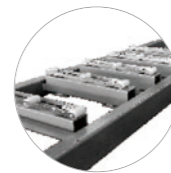
SAFETY FEATURES 安全特点



Big Pulley for
steel rope
大钢丝滚轮



Safety valve for
anti-explosion of
hydraulic system
安全阀加强安全保护



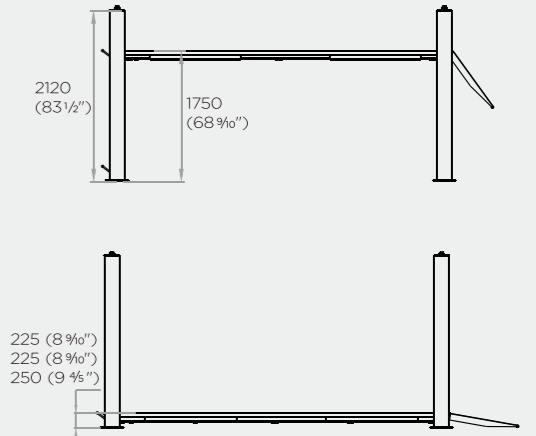
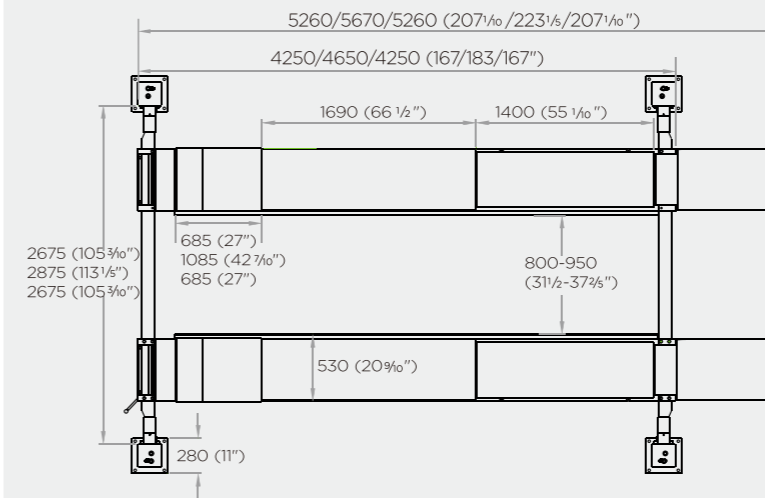
Abrasion resistant
slip plates for 4
wheel alignment
四轮定位耐磨侧滑配置



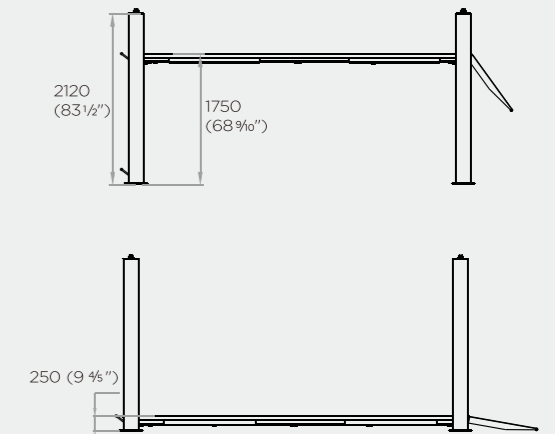
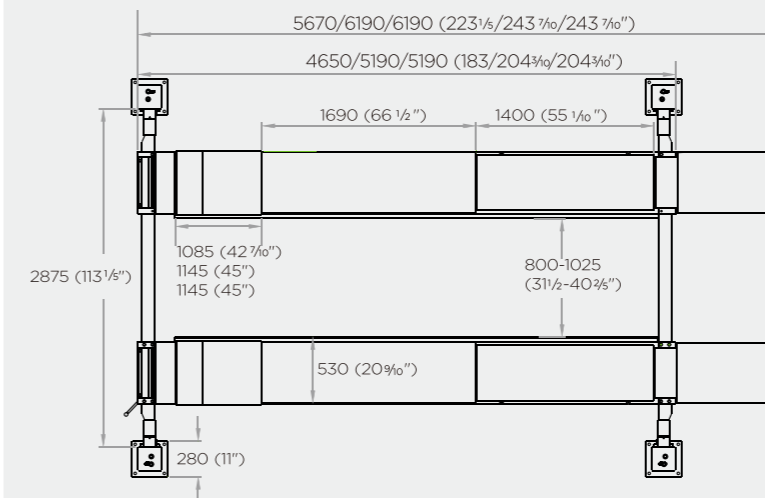
Equipped with main
insurance and rope
break insurance on
each column
每个立柱设有主保险和
断绳保险

DIMENSION 尺寸参数

U-FS35/FS35D/FS40



U-FS45/FS50/FS55



TECHNICAL DATA 技术参数

MODEL 型号	U-FS35/FS35D/FS40	U-FS45/FS50/FS55
Capacity 举升重量	3.5 / 3.5 / 4.0 Ton	4.5 / 5.0 / 5.5 Ton
Lifting height 举升高度	1750mm(69")	1750mm(69")
Min height 平台高度	225/225/250mm(8 9/16 / 8 9/16 / 9 4/5 ")	250mm(9 4/5 ")
Platform length 平台长度	4250/4650/4250mm(167/183/167")	4650/5190/5190mm(183/204/204")
Power supply 电源功率	220V 1PH 50/60Hz 2.2KW 220/380V 3PH 50/60Hz 2.2KW	220V 1PH 50/60Hz 2.2KW 220/380V 3PH 50/60Hz 2.2KW